

## **AS AND A LEVEL % FOR PAST THREE YEARS**

- **AS level A grade 25%.**
- **AS level A-C 96%.**
- **A level A\*, A grades 50%.**
- **A level A\*-C 96%.**

# ASSESSMENT OBJECTIVES

**AO1**

## **Contextual Understanding**

Development of ideas that are informed by investigative contextual study of art, craft and design.

**AO2**

## **Creative Making**

Select and experiment with appropriate breadth of media and processes, exercising suitable control of these to maximise creative potential.

**AO3**

## **Reflective Recording**

Gather, select, organise and communicate relevant information in investigating visual and other sources.

**AO4**

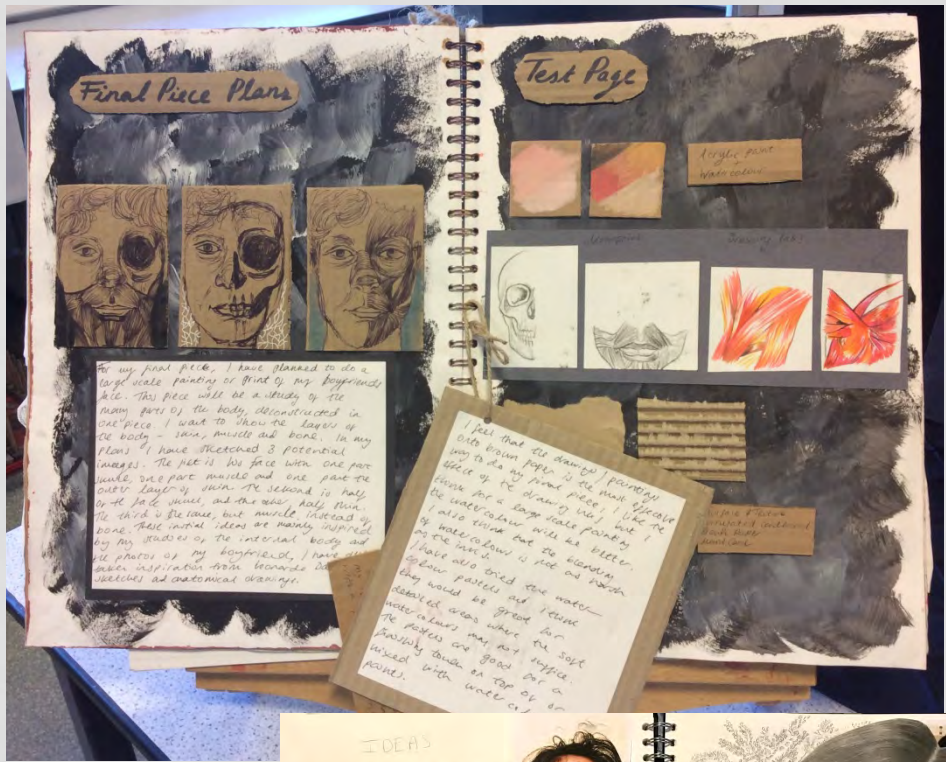
## **Personal Presentation**

Presentation of personal final outcomes with evidence of the processes by which they were produced.

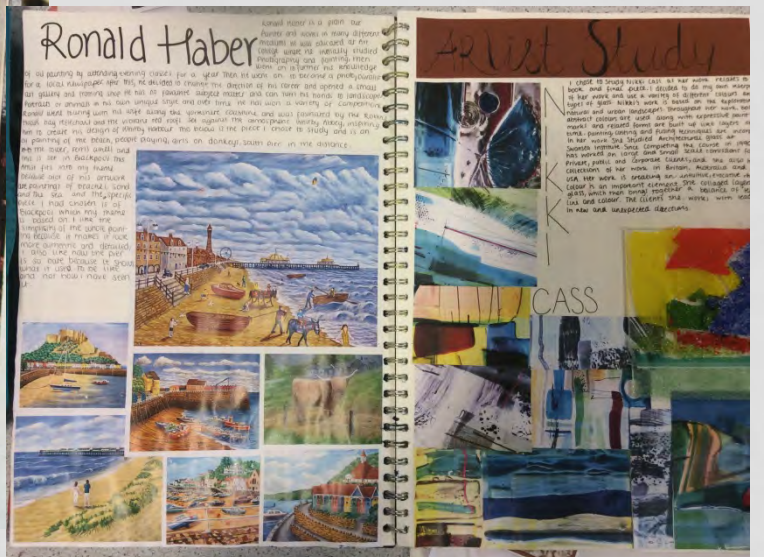
<b>AS LEVEL</b>		<b>A LEVEL</b>	
SEPT – OCT ½ Term	NOV - MAY (Marks submitted 31 <sup>st</sup> May)	SEPT -FEB	FEB-MAY (Marks submitted 31 <sup>st</sup> May)
<b>WORKSHOPS</b>	<b>ONE</b> Coursework Unit (40%) <i>'Personal Creative Enquiry'</i>  <i>(Importance of observational drawing, extended writing and personal responses)</i>	<b>ONE</b> Coursework Unit (36%) <i>'Personal Investigation'</i> + 1000/max 3000 word <i>'Extended Response Document'</i>	Externally Set Assignment (24%)  <b>15 hour exam</b> (choose 1 question and develop personal response)

- Entries by 10th October
- Exam release 1st February
- Marks Entered 31st May
- Moderation (AS) 13th June – 1st July

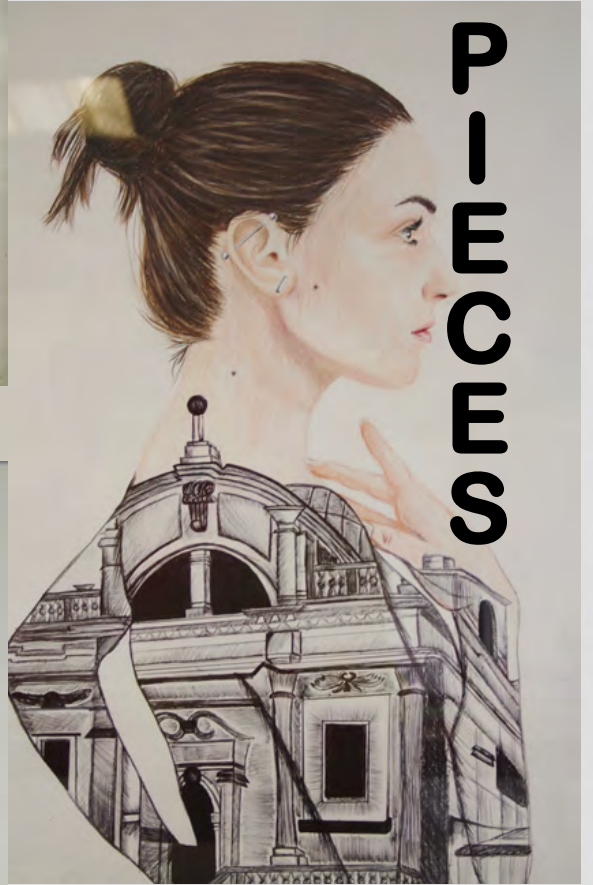
# SKETCHES



# BOOKS



**F I N A L P I E C E S**









# WORKSHOPS





# TRIPS – LONDON, LIVERPOOL, NEW YORK





# L I F E D R A W I N G



**E  
X  
H  
I  
B  
I  
T  
I  
O**



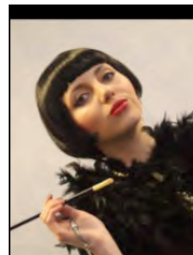
## STARTING POINTS

You must:-

**Take own photos and collect objects/artefacts as a starting point to your work** – this must directly inspire and link to your chosen personal theme.

*Think about visiting local places of interests e.g. markets, antique shops, parks, beaches, farms etc.*

## EXAMPLES



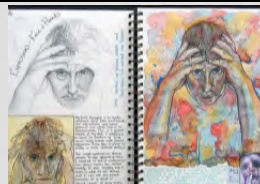
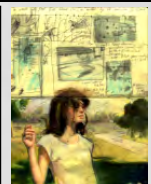
## OBSERVATIONAL DRAWING

You must include:-

**Drawings from direct observation**- these can be from objects, artefacts or your own photos. *You must include photos of you drawing from direct observation in sketchbook.*

**Drawings for purpose** - these can be quick, expressive responses to visual stimuli.

*Think about sketches planning your compositions, close up studies and working drawings.*



## VISITS TO MUSEUMS AND GALLERIES

You must:-

**Independently visit museums and galleries**- this must be documented with own photos, leaflets and annotations in your little sketchbook and link to your own work.



## CONTEXTUAL UNDERSTANDING

You must:-

**Scrutinise works of Art** – write like an Art critic by analysing Artists' intentions and where their work fits in time, society and the wider world. *Watch TV documentaries and read Art reviews in magazines.*

**Show how the Artists' work informs your own practise** – your Artist studies must be relevant and need to demonstrate their influence on your own work

*Do not just copy on Artwork.*



## LEARNER'S STATEMENT

You must:-

**Write a Learner's statement** – this is a working document that must be continually updated as your enquiry/investigation develops.

*Comment critically on what you have been doing and what you are planning to do next.*

This replaces the 'My Intentions' document. An electronic copy is available on the WJEC website.