

Operating system manages...



The operating system provides an interface by...

Windows, _____, _____,
pointers



Security



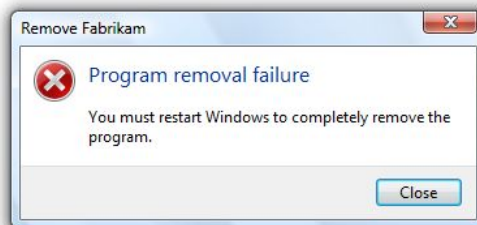
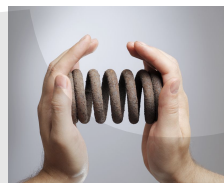
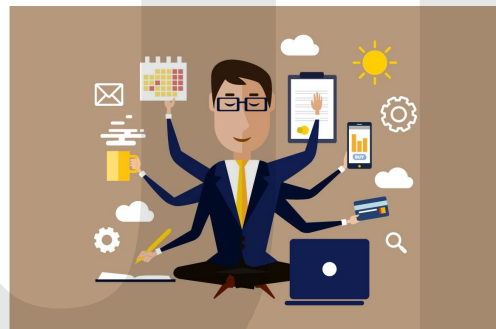
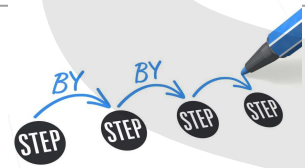
Providing a

```
Usage:
command [options] [arguments]

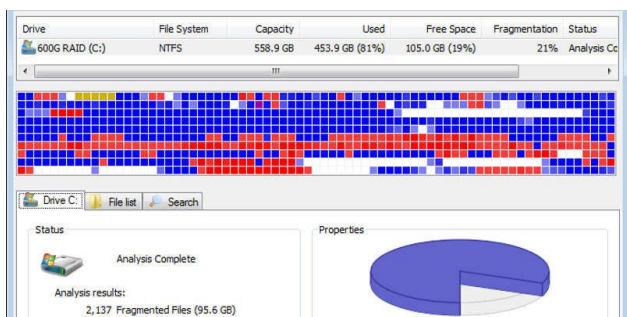
Options:
  -h, --help            Display this help message
  -q, --quiet           Do not output any message
  -v, --version         Display this application version
  --ansi               Force ANSI output
  --no-ansi            Disable ANSI output
  -i, --no-interaction Do not ask any interactive question
  -vlevel, --verbose Increase the verbosity of messages: 1 for normal output, 2 for more verbose output and 3 for debug

Available commands:
  console Interactive console for controlling bitbucket repositories.
  help    Display help for a command
  list    Lists commands
  repos  Get the list of bitbucket repositories.
  ..to-deploy/bitbucket-clj/docs
```

Processes



Defragmentation

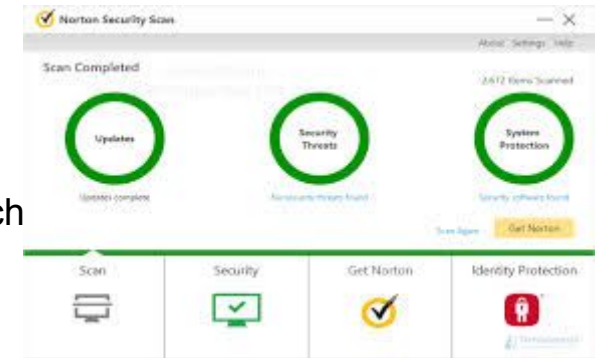


Customization
of desktop background



Utility software

Type of software: _____



Description: to scan for _____ which
could be causing issues with the
disc access speed / damaging data.

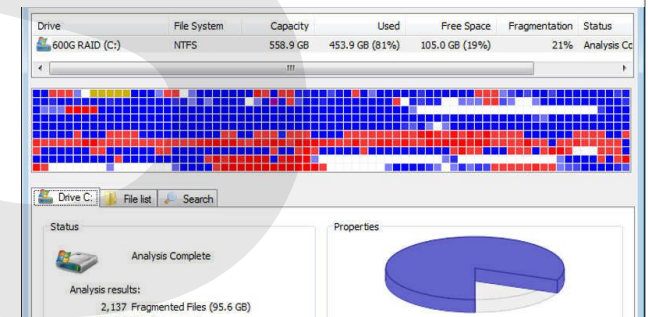
Type of software: Firewall

Description: _____



Type of software: _____

Description: is the process where
files are physically re-arranged on
disk so that they are no longer
fragmented and the parts of each
file are stored together / improving
access speed.

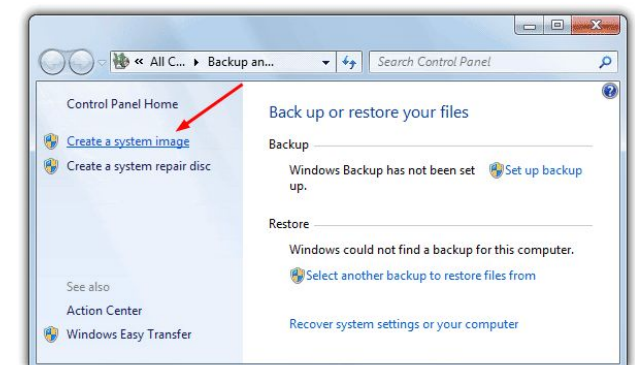


Type of software: Backup & archive

Description:

Backup= _____

Archive= _____



Operating system manages...



The operating system provides an interface by...

WIMP



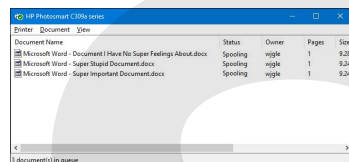


Providing a

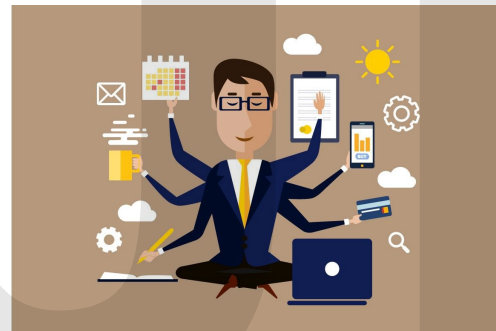
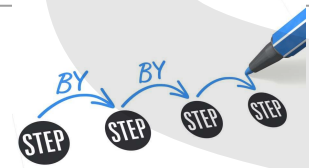
```
Usage:
  command [options] [arguments]

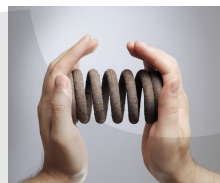
Options:
  -h, --help            Display this help message
  -q, --quiet           Do not output any message
  -v, --version         Display this application version
  -c, --config          Force ANSI output
  --ansi              Disable ANSI output
  --no-interactive    Do not ask any interactive question
  --verbose, --verbose Increase the verbosity of messages: 1 for normal output, 2 for more verbose output and 3 for debug

Available commands:
  help      Interactive console for controlling bitbucket repositories.
  help      Displays help for a command
  list      Lists commands
  status    Get the list of bitbucket repositories.
  ..to-deploy/bitbucket-cli/dist
```



Processes

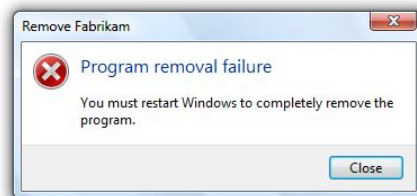


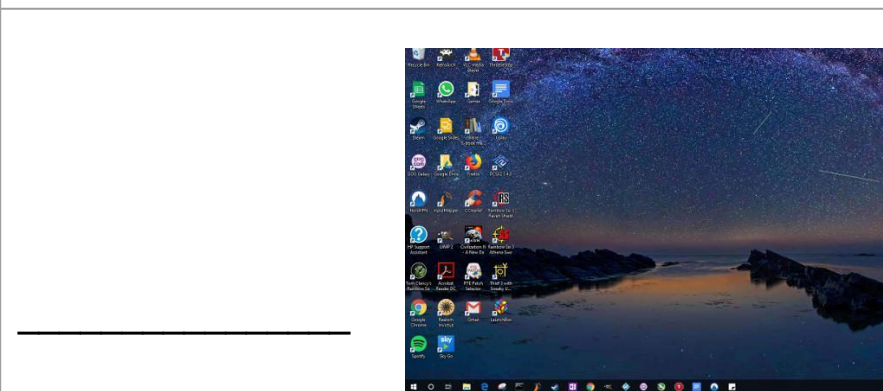
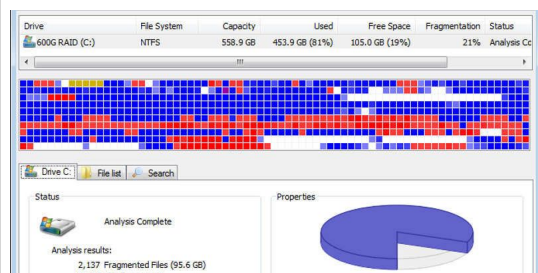


Memory



Providing the user with

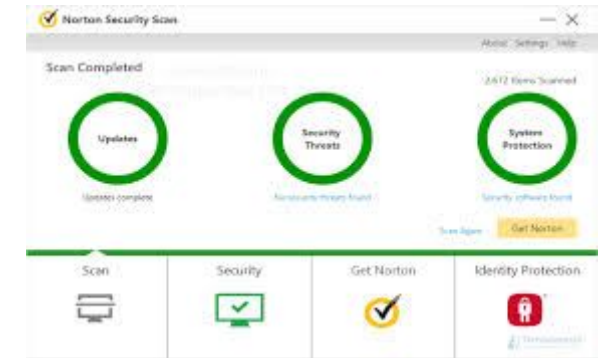




Utility software

Type of software: Virus scanner

Description: _____



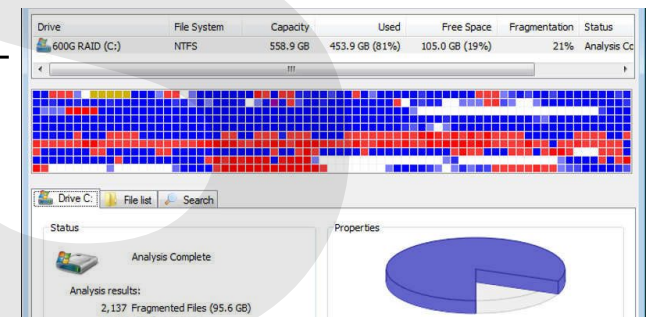
Type of software: _____

Description: _____



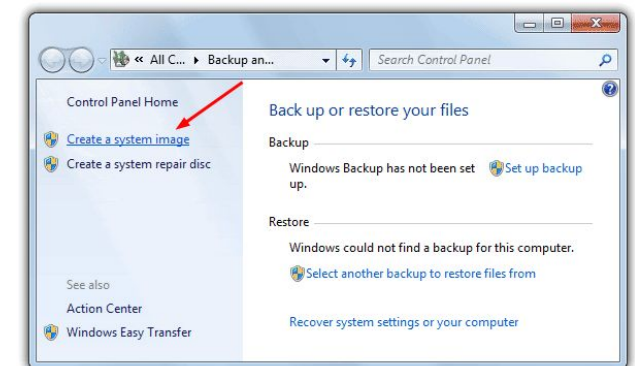
Type of software: _____

Description: is the process where files are _____ on disk so that they are no longer fragmented and the parts of each file are stored together / improving



Type of software: _____

Description: _____



Three resources managed by an operating system are output devices, the backing store and Central Processing Unit (CPU).

Describe the role of the operating system when managing **each** of these resources. [3]

.....
.....
.....



(b) Explain how the operating system manages printing. [2]

(c) Explain how the operating system manages the processor. [2]

(d) Explain how the operating system manages RAM. [2]

.....
.....
.....
.....