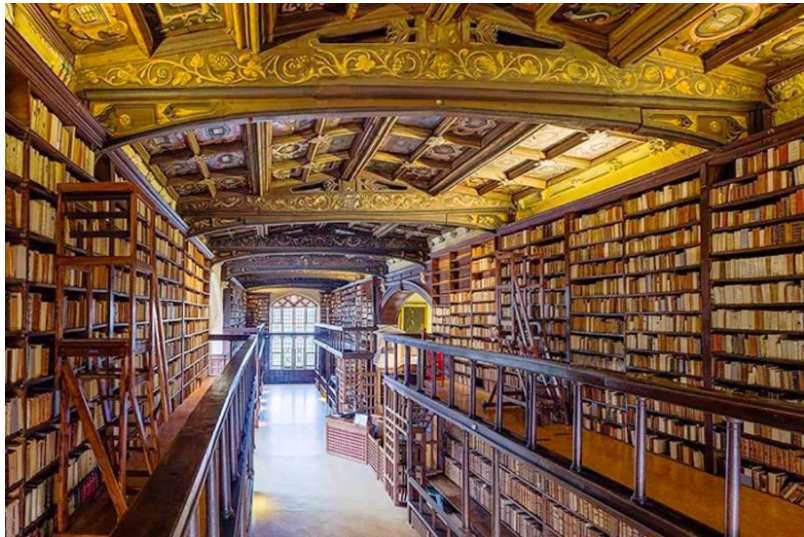


An IDE is an application that can be used to develop software and can often support different languages.



Tool= _____

Features= They are imported at the beginning of a program



Tool= Linker

Features= _____



Tool= _____

Features= Used to _____ errors and can provide



Tool= _____

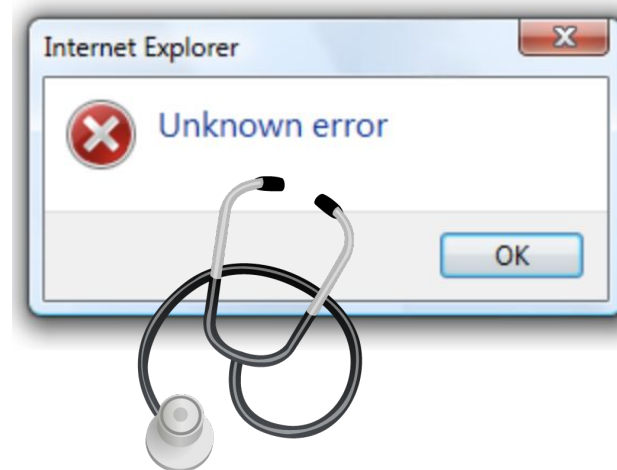
Features= Loads executable code into memory



VAR

Tool= _____

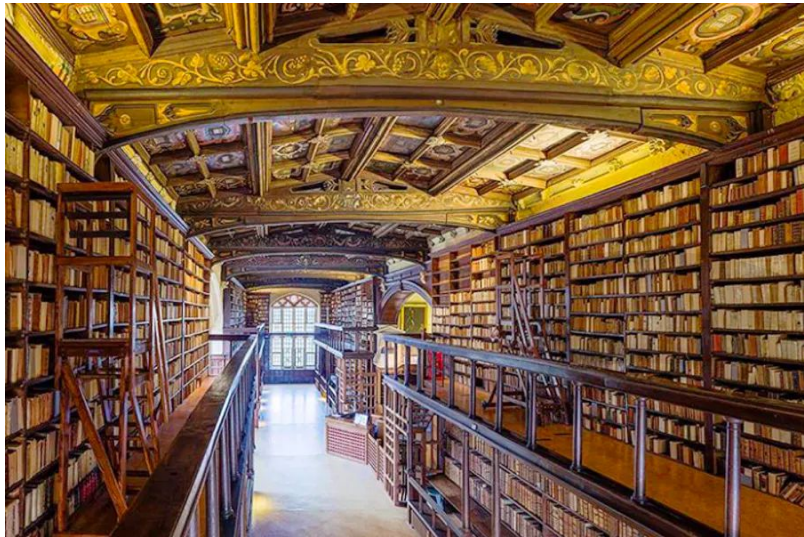
Features= A way to inspect variables and their



Tool= Error diagnostic

Features= _____

An IDE is an application that can be used to develop software and can often support different languages.



Tool= _____

Features= They are imported at the beginning of a program



Tool= _____

Features= Combines one or more object files for execution



Tool= Debugger

Features= _____



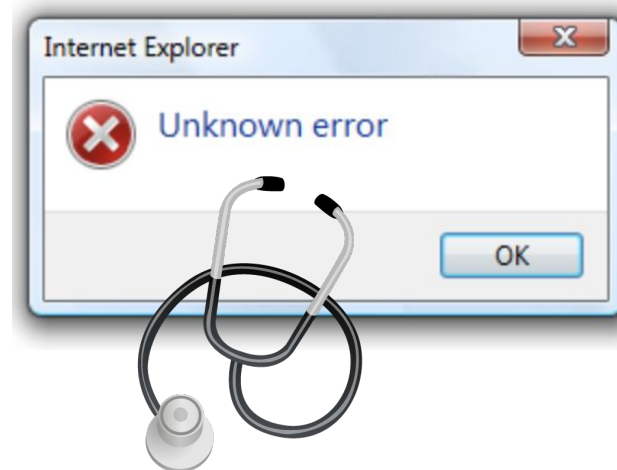
Tool= Loader

Features= _____



Tool= _____

Features= _____



Tool= _____ diagnostic

Features= _____

