



**DYFODOL
DISGLAIR
BRIGHTER
FUTURES**



Surveyor

More information can be found at
[Surveyor \(gov.wales\)](https://gov.wales/surveyor)



Gyrfa Cymru
Careers Wales



Qualifications Required

GCSE (A-C), NVQ 2 up to Post Grad, Industry Qualifications, NVQ7 or 8

You could study for a degree or professional qualification approved by the Royal Institution of Chartered Surveyors (RICS) you will usually need:

- 2 - 3 A levels or equivalent (undergraduate course)
- A first degree in any subject (postgraduate course)

To get onto an Apprenticeship, you will usually need:

- 4 - 5 GCSEs at grades A* to C
- 2 - 3 A levels (or equivalent)

However, entry requirements for different courses vary, so contact universities for more details.

Some universities accept the Welsh Baccalaureate as equivalent to 1 A level.

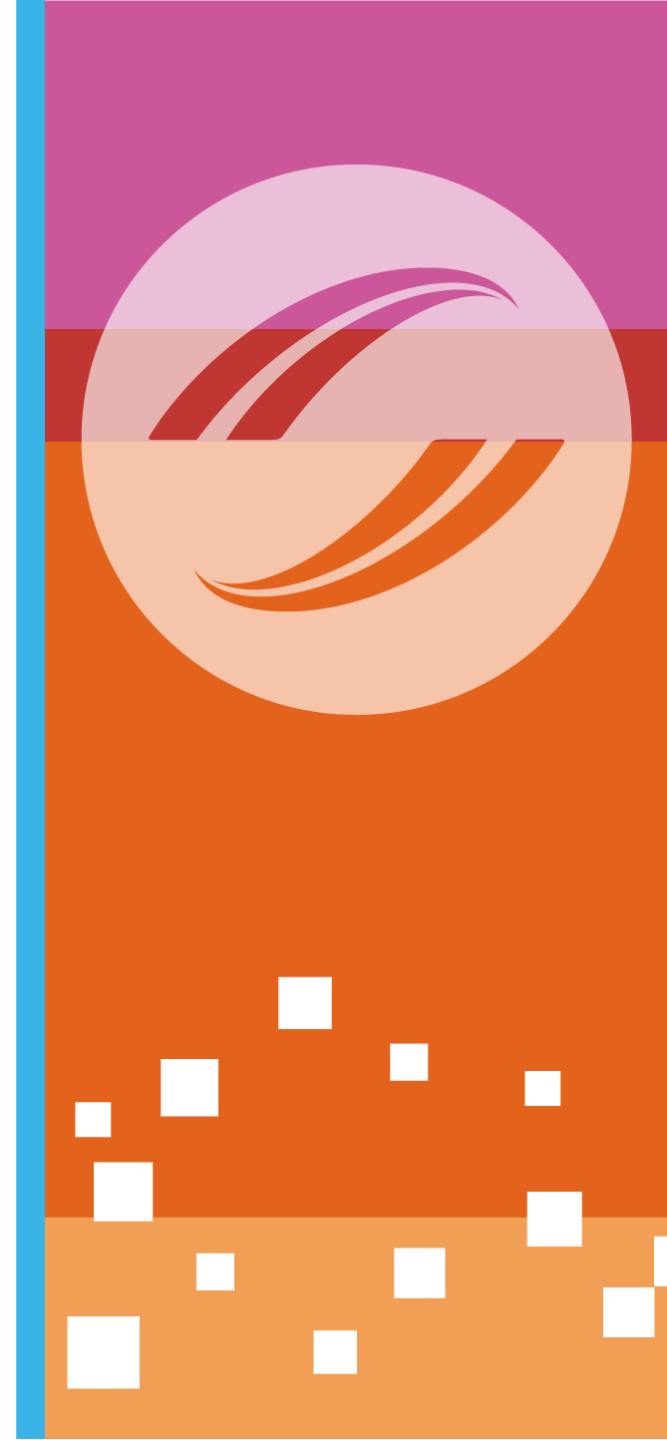


Skills and Qualities

- Have knowledge of building and construction
- Be thorough and pay attention to detail
- Have the ability to use your initiative
- Display analytical thinking skills
- Have patience and the ability to remain calm in stressful situations
- Show knowledge of public safety and security
- Use thinking and reasoning skills
- Show persistence and determination
- Be able to use a computer and the main software packages confidently

Do I need Welsh Language skills?

Welsh Language skills are often asked for. Being able to read, write and speak Welsh may be an advantage when you're looking for work in Wales.



Entry Routes

There are several routes to becoming a surveyor. You can gain the qualifications you need by completing a university course, a graduate training scheme or an apprenticeship.

You could study for a degree or professional qualification approved by the Royal Institution of Chartered Surveyors (RICS). Relevant subjects include surveying, construction, civil or building engineering.

If you have an existing degree in another subject, you may be able to take an accredited postgraduate qualification in surveying.

If you already have a relevant foundation degree or higher national diploma and are working in a relevant field (i.e. as a surveying technician), your employer may help you do further qualifications to become a fully qualified surveyor.

You could also do a graduate trainee scheme with a construction company and earn a postgraduate qualification, or do a distance learning course with the University College of Estate Management. You could start your career as a surveying technician or a geospatial survey technician.



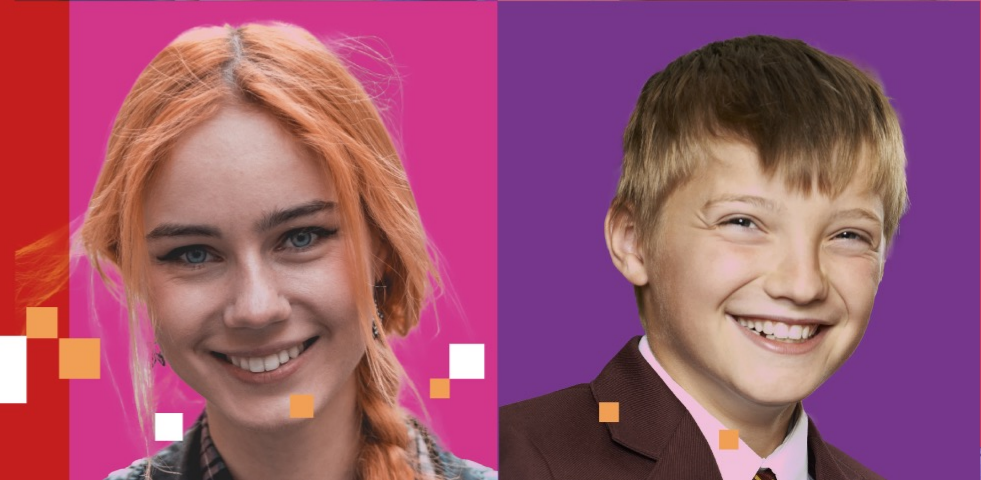
Salary

The pay rates given below are approximate.

- Starting: £25,000 - £30,000
- With experience: £35,000 - £45,000
- Senior Surveyors earn £45,000 - £70,000

Salaries typically range depending on location and level of responsibility.

Salaries and career options improve with chartered status.



For more information please use the QR code



**For entry to the Sixth Form, some schools
require that students need 5 A*-C at GCSE, such
as:**

DT: Product Design

- C & above in DT or Art
- B+ in BTEC Engineering

Maths

B in Higher Tier



For more information or help with your career planning

Please Contact your school-based careers adviser

Deb Smith

Careers Adviser

Careers Wales

Mobile: 07890 274896

E-mail: deb.smith@careerswales.gov.wales



For more information or help with your career planning

Please Contact your school-based careers adviser

David Jones Careers Adviser

david.jones@careerswales.gov.wales

Direct Number: 02920 84 6691

Mobile: 7827991532

