



DYFODOL
DISGLAIR
BRIGHTER
FUTURES



Cabin Crew

More information can be found at
[Cabin Crew \(gov.wales\)](https://gov.wales/cabin-crew)



Gyrfa Cymru
Careers Wales



Qualifications Required

Entry requirements vary between airlines. However, most airlines usually ask for a minimum of 4 GCSEs (or equivalent) at grade C/4 or above, including English and maths, and a high standard of written and spoken English.

Other useful GCSEs include:

- modern foreign languages
- leisure and tourism
- Hospitality

To get onto an apprenticeship you'll usually need at least 2 GCSEs at grade C/4 or above, possibly including English and maths.

Relevant vocational air cabin crew qualifications are available at some colleges



Skills and Qualities

To become a Cabin Crew member, you'll need:

- to have excellent people skills
- to be able to keep calm under pressure
- teamworking skills
- the ability to work quickly and well in confined conditions
- a good level of personal hygiene, as you'll be working with food and drink
- to be physically fit and able to swim
- an interest in aviation

Being able to speak a foreign language can be useful, as can knowledge of first-aid.

Some airlines insist that you have good eyesight. You should have normal colour vision and your hearing should allow you to communicate effectively in a noisy environment. You will also have to pass a criminal records check. This is now known as a Disclosure and Barring Service (DBS) check.

A driving licence may be required for people wishing to get into this job.

Some employers will expect you to live near the airport. This usually means being within one hour of travel



Entry Routes

Airlines will usually expect you to be educated to at least GCSE level.

Some knowledge of first aid would be very useful

Various vocational qualifications are available - see below for more details.

An apprenticeship is also a great way into this career. Once employed you might be able to work towards a NVQ qualification.

People with experience of customer contact work, such as reception, sales and catering, will be at an advantage - so start to think now about what you can do to help your application.

Training

You will first receive airport-based training which can last up to 8 weeks. You may have to do some study at home before starting the course. The training usually covers subjects such as:

- safety and survival, especially the use of emergency slides and chutes and of oxygen equipment
- first aid techniques, such as handling heart attacks
- how to serve food and use the galley
- customs and immigration regulations
- currency exchange
- customer service and conflict management

This initial period is followed by further on-the-job training, and usually a period of regular on-board assessment.



Salary

The pay rates given below are approximate.

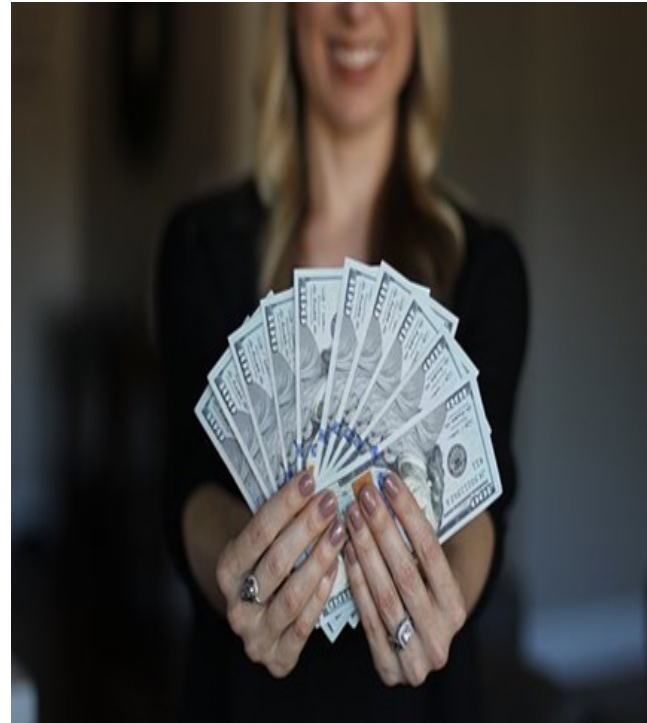
- Starting: £18,000 - £20,000

- With experience: £21,000 - £24,500

- Senior positions earn £28,000 - £34,000

Cabin Crew usually work shifts, including weekends, on a rota basis.

You'll need to be available to work at short notice and on any day of the year.



**For more information please use the
QR code.**



**For entry to the sixth form, some schools
require that students need students need 5
A*-C at GCSE such as:**

Language subjects:

French

○ B in French, will consider those with C

Spanish

B in Spanish, will consider those with C



For more information or help with your career planning

Please Contact your school-based careers adviser

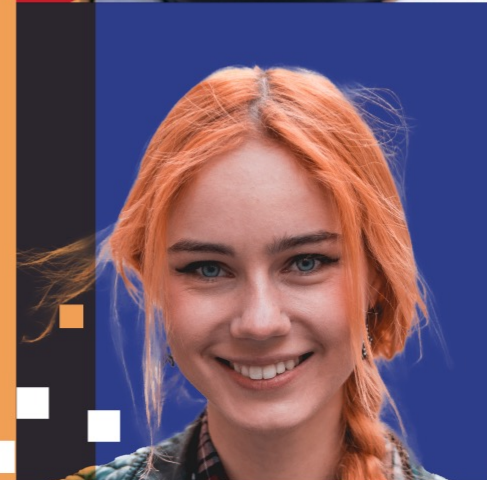
Deb Smith

Careers Adviser

Careers Wales

Mobile: 07890 274896

E-mail: deb.smith@careerswales.gov.wales



For more information or help with your career planning

Please Contact your school-based careers adviser

David Jones Careers Adviser

david.jones@careerswales.gov.wales

Direct Number: 02920 84 6691

Mobile: 7827991532

