



DYFODOL
DISGLAIR
BRIGHTER
FUTURES



Police Officer

More information can be found at
[Police Officer \(gov.wales\)](https://gov.wales/police-officer)



Gyrfa Cymru
Careers Wales



Qualifications Required

From 2020 all new Police Officers need to be educated to degree level.

You will need a good general education and a pass in the assessment centre tests. Entrants have a wide range of academic qualifications.

Some entrants have GCSEs at grade C/4 or above and/or A levels. English and maths are useful subjects at GCSE.

Relevant vocational qualifications include:

- BTEC level 2 qualification in uniformed public services
- City & Guilds level 3 qualification in knowledge of policing

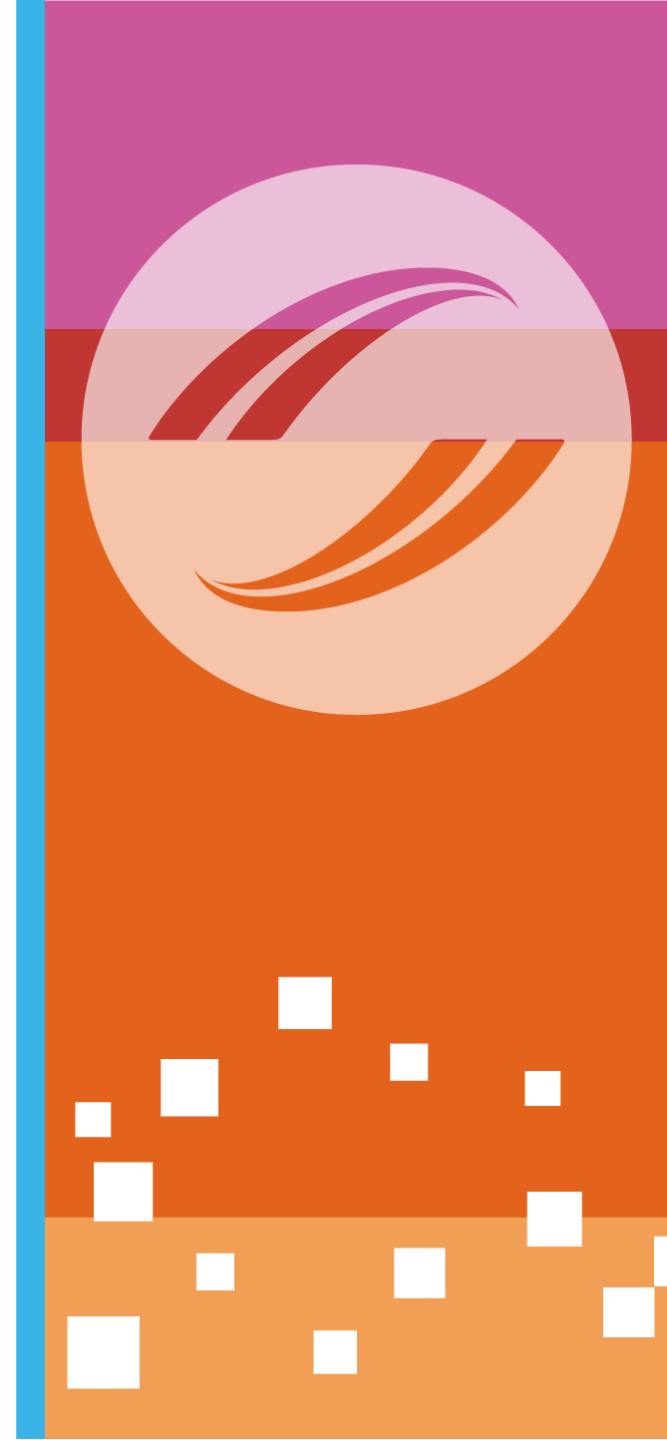
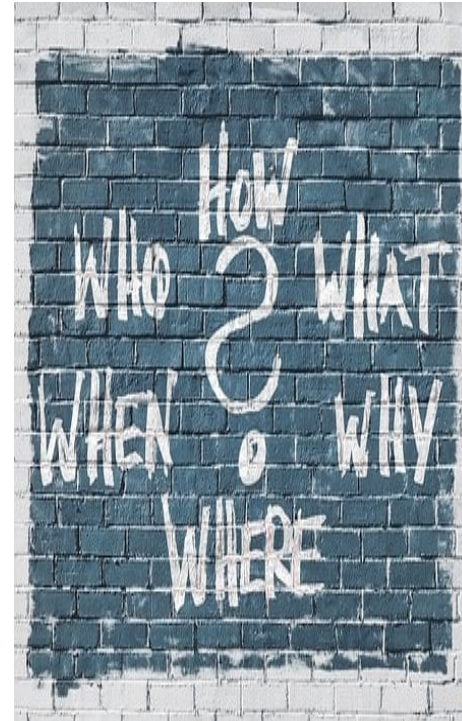


Skills and Qualities

To become a Police Officer, you'll need to be able to:

- understand, respect and deal with people of all ages, types and backgrounds
- demonstrate a community and customer focus
- handle difficult situations with sensitivity
- use your initiative
- make decisions
- see things from other people's point of view
- work well as a member of a team
- organise and motivate yourself
- act quickly and keep calm and confident in emergencies
- build good relationships with people
- gather information from different sources
- verbal and written communication skills
- honesty and good judgement
- number and logical reasoning skills
- observation skills

Basic IT and keyboard skills would be an added advantage.



Entry Routes

The minimum age for entry to the police service is 18.

You should be a British or EU/EEA citizen, a Commonwealth citizen or someone whose stay in the UK is unrestricted. (You need to have been a UK resident for the past three years).

Currently, different forces may ask for different qualifications.

Some ask for a level 3 qualification (A level or equivalent), but you will need to check with the police force you wish to join.

However, from 2020 all new Police Officers will need to be educated to degree level.

This will involve studying for a degree, completing a three-year degree apprenticeship, or taking a postgraduate conversion course.

A new degree apprenticeship was introduced in 2017.

Some police services operate volunteer cadet training schemes for young people - but opportunities are limited.

To apply, you will first need to check to see which forces are recruiting, or check with your local force to see when they will next be recruiting. You can only apply to one force at a time.

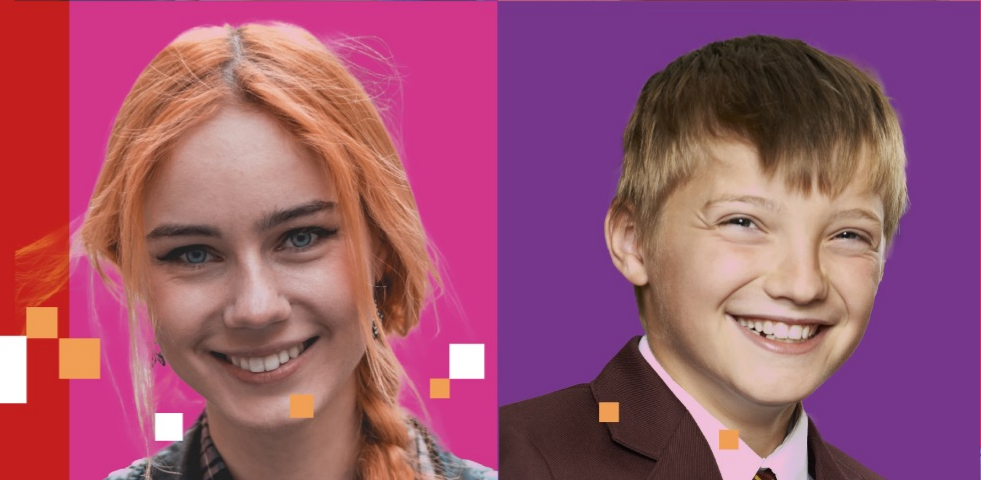


Salary

Police Officers are paid on a rising scale.

The pay rates given below are approximate.

- Starting: £19,000 - £39,000
- With experience: £39,000 - £43,000
- Senior Police Officers: £49,000 - £53,500



**For more information please use the
QR code**



**For entry to the Sixth Form, some schools
require that students need 5 A*-C at GCSE, such**

as:

Criminology

- C in GCSE English

Psychology

- B in double or triple science
- C in humanities GCSE
 - C English
- B Maths Higher Tier

Sociology

- C English language
- 4 other C+ Grades



For more information or help with your career planning

Please Contact your school-based careers adviser

Deb Smith

Careers Adviser

Careers Wales

Mobile: 07890 274896

E-mail: deb.smith@careerswales.gov.wales



For more information or help with your career planning

Please Contact your school-based careers adviser

David Jones Careers Adviser

david.jones@careerswales.gov.wales

Direct Number: 02920 84 6691

Mobile: 7827991532

