



**DYFODOL  
DISGLAIR  
BRIGHTER  
FUTURES**



# Care Assistant

More information can be found at  
[Care Assistant \(gov.wales\)](https://gov.wales/care-assistant)



Gyrfa Cymru  
Careers Wales



# Qualifications Required

GCSE (D-G), NVQ 1 up to GCSE (A-C), NVQ 2

There are no formal entry requirements, but some employers prefer you to have a relevant level 2 vocational qualification.

You can study for this at school, college or through an apprenticeship.

Qualifications like GCSEs in English and maths will be beneficial.

Any work experience where you care for others should also help.

To get onto an apprenticeship, you'll usually need five GCSEs at grade C/4 or above, possibly including English and maths



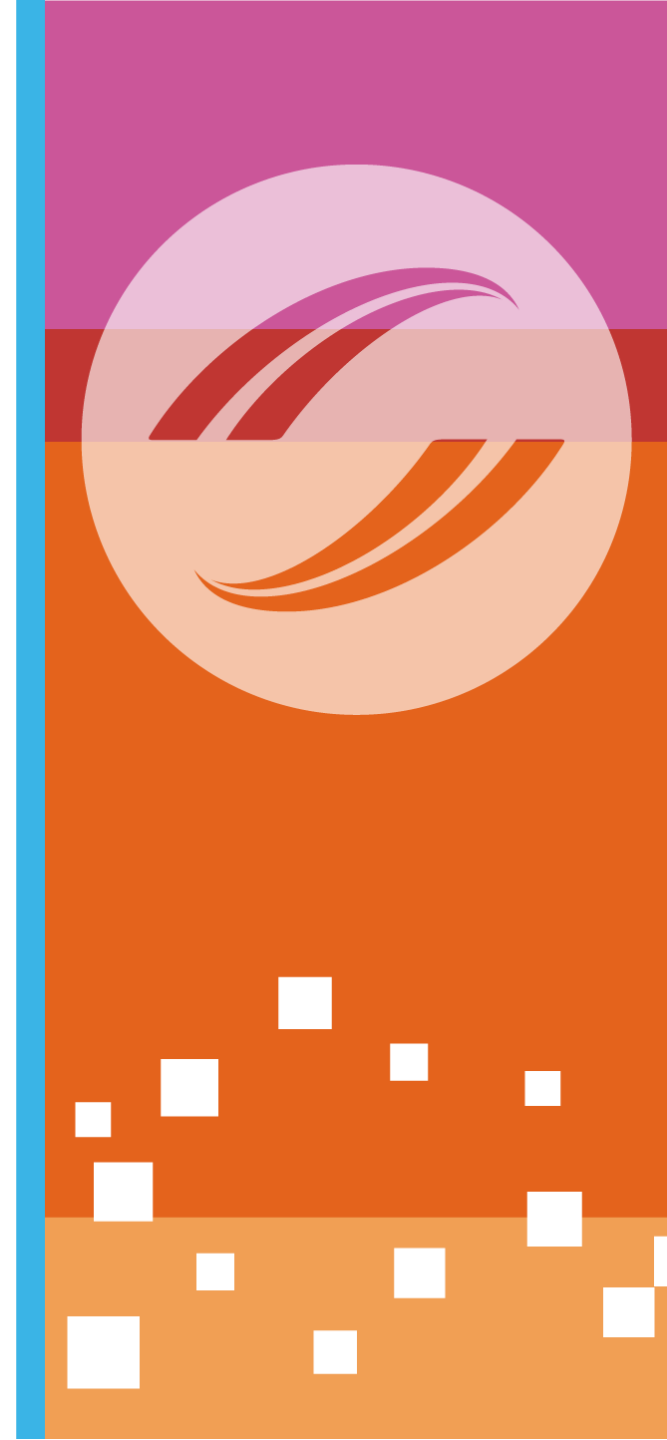
# Skills and Qualities

To become a Care Assistant, you need:

- patience and tact
- compassion and a sense of humour
- excellent communication and interpersonal skills
- the ability to talk and listen to people from all backgrounds
- the ability to work closely with colleagues, such as Nurses and Doctors, Teachers, Care Officers or Social Workers
- to give help and support when people in your care have concerns or emotional problems
- to respect each individual's right to keep as much independence and privacy as they can
- to treat each person as an individual, with different physical and emotional needs
- to be discreet, and able to ease people's embarrassment when you help them with personal tasks, such as washing or using the toilet
- to be willing to learn and develop new skills on-the-job

## Do I need Welsh Language skills?

Welsh Language skills are often asked for. Being able to read, write and speak Welsh may be an advantage when you're looking for work in Wales.



# Entry Routes



Qualifications are not always needed for entry, though a relevant level 2 qualification is desirable.

Many employers prefer applicants with relevant experience (paid or unpaid) and training in a care environment.

You could study a health and social care course at school or college to help you find out more about this type of work.

In Wales, registration is a requirement for certain roles within the care sector.

If you would like to learn more about working in care in Wales, please visit the We Care Wales website <http://www.wecare.wales> .

Apprenticeships in care work may be available in your area.

You may be able to study for a NVQ as part of the apprenticeship. Take a look at our information article 'Apprenticeships – How do I apply', for more details about applying for apprenticeship positions.

Possession of a first aid certificate is desirable.



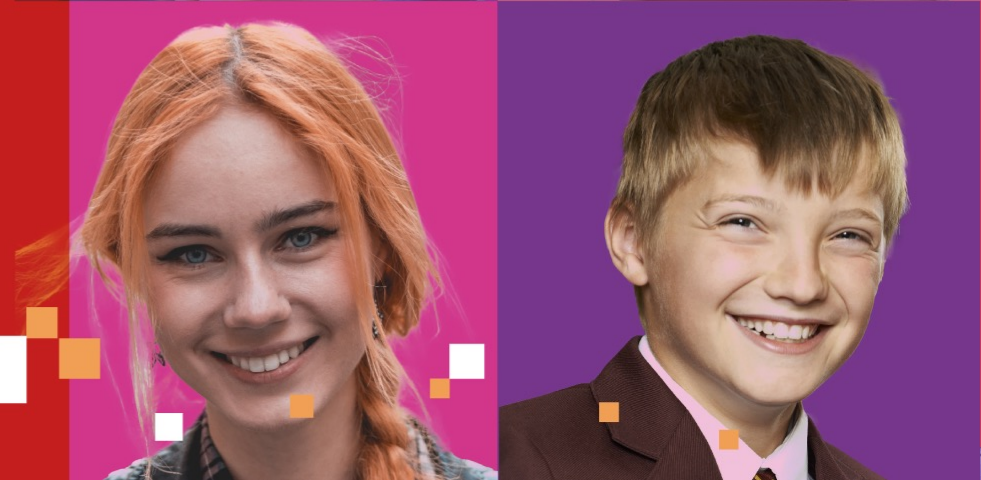


The pay rates given below are approximate.

NHS employees are paid on a rising scale from the Agenda for Change.

- Starting: Band 2 pay of £17,460 - £18,702
- With experience: Band 3 pay of £17,787 - £20,448
- Senior Care Assistants earn Band 4 pay of £20,150 - £23,363

## Salary



**For more information please use the  
QR code**





# For more information or help with your career planning

Please Contact your school-based careers adviser

**Deb Smith**

Careers Adviser

Careers Wales

Mobile: 07890 274896

E-mail: [deb.smith@careerswales.gov.wales](mailto:deb.smith@careerswales.gov.wales)



# For more information or help with your career planning

Please Contact your school-based careers adviser

**David Jones** Careers Adviser

[david.jones@careerswales.gov.wales](mailto:david.jones@careerswales.gov.wales)

**Direct Number:** 02920 84 6691

**Mobile:** 7827991532

