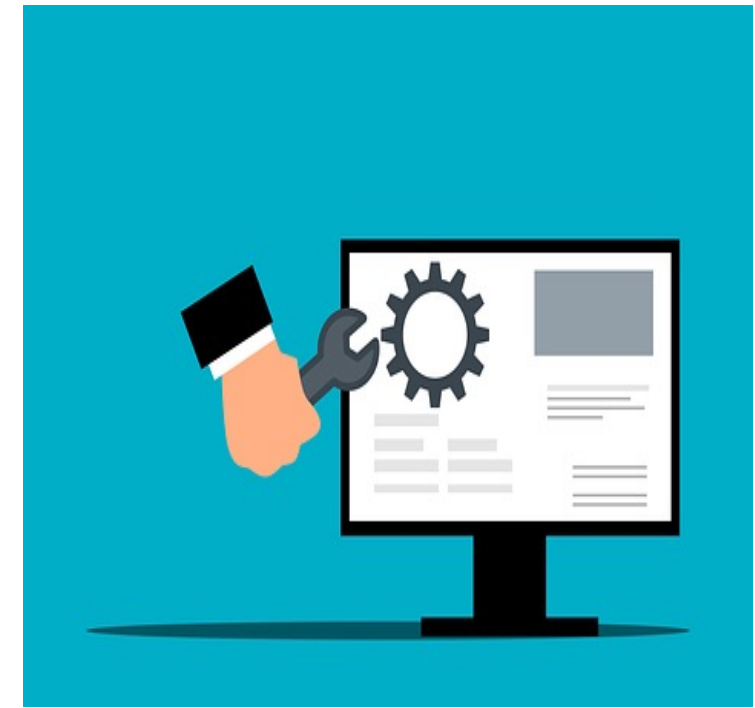




**DYFODOL  
DISGLAIR  
BRIGHTER  
FUTURES**



# Technical (IT) Support Engineer

More information can be found at

[Technical Support Engineer \(gov.wales\)](https://gov.wales/technical-support-engineer)



Gyrfa Cymru  
Careers Wales



# Qualifications Required

GCSE (D-G), NVQ 1 up to A Level, NVQ 3

Various vocational BTEC and City & Guilds qualifications are available and could help you to get into this career, including:

- BTEC level 3 - professional competence for IT and telecoms professionals
- City & Guilds level 1 - IT professional
- City & Guilds level 2 and level 3 technician in digital technologies

To get onto an Intermediate or Advanced Level Apprenticeship, you'll usually need five GCSEs at grade C/4 or above, possibly including English and maths.

To get onto a Degree Apprenticeship, you will usually need at least two A levels.

Some have higher qualifications, including A levels, an HND or degree, for example, in electronic engineering, computer science or computer engineering.



# Skills and Qualities

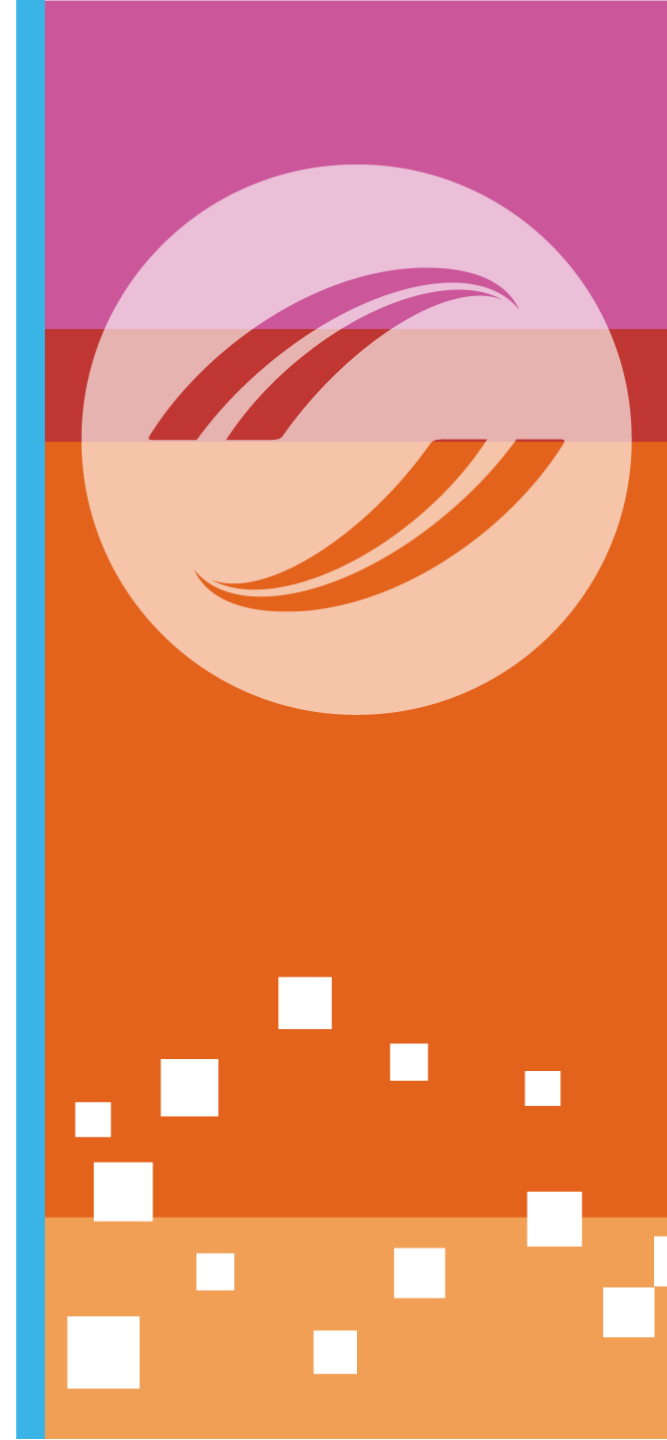
To become a Technical Support Engineer, you will need:

- a sound technical IT background
- to be familiar with the products or services provided to customers/colleagues, as well as keeping up to date with any new developments
- to understand hardware and software
- good analytical and problem-solving skills
- a methodical approach to your work
- strong communication skills, especially when explaining technical information
- to be able to remain calm under pressure
- good time management skills to meet users' needs and problems



## **Do I need Welsh Language skills?**

Welsh Language skills are often asked for. Being able to read, write and speak Welsh may be an advantage when you're looking for work in Wales.



# Entry Routes

## Entry routes

You can get as a Technical Support Engineer with A levels. Useful subject areas include IT and science. Or you could choose to go onto university, to study a relevant degree. A degree isn't usually required for this job, but at university you will learn some of the skills, techniques and technologies, that employers need.

Another option is to get onto a Degree Apprenticeship in a relevant area.

You will need to start carefully planning which A levels you are going to study. IT-based subjects at GCSE and A level would help you to stand out from the crowd. Then once you are studying for your A levels, you will need to start looking for suitable job vacancies, or applying to universities through UCAS.

## Training

If you would like some training, then City & Guilds offer a level 2 and level 3 in ICT systems and principles. Other courses could be available in your area.

## Progression

With many years of experience, some Technical Support Engineers progress into IT Support Manager roles, and then IT Specialist Manager roles.



# Salary

The pay rates given below are approximate.

- Starting: £21,000 - £24,000

- With experience: £26,500 - £31,000

- Senior Technical Support Engineers earn £34,000 - £38,000





**For more information please use the  
QR code**



# **For entry to the Sixth Form, some schools require that students need 5 A\*-C at GCSE, such as:**

## Computer Science

- B & above in Computer Science, will consider pupils with C;
- B Maths

## Digital Technology

- B ICT
- B Digital Technology
- B Computer Science (full course GCSE)

## BTEC ICT

- C in Digital Technology or Computer science



# For more information or help with your career planning

Please Contact your school-based careers adviser

**Deb Smith**

Careers Adviser

Careers Wales

Mobile: 07890 274896

E-mail: [deb.smith@careerswales.gov.wales](mailto:deb.smith@careerswales.gov.wales)





# For more information or help with your career planning

Please Contact your school-based careers adviser

**David Jones** Careers Adviser

[david.jones@careerswales.gov.wales](mailto:david.jones@careerswales.gov.wales)

**Direct Number:** 02920 84 6691

**Mobile:** 7827991532

