

**DYFODOL
DISGLAIR
BRIGHTER
FUTURES**



Artist

More information can be found at
[Artist | Job Information \(gov.wales\)](https://gov.wales/job-information/artist)



Gyrfa Cymru
Careers Wales



Qualifications Required

GCSE (D-G), NVQ 1 up to Postgraduate, Industry Qualification, NVQ 7 or 8

To enter any course in art and design, you'll need a portfolio of your work.

The usual entry requirements for a relevant Foundation course are:

- 1/2 A levels. You'll need an A level in Art or in an art-based subject
- GCSEs at grade C or above in 4/5 subjects. Some courses ask that you have a pass in English and Maths
- a BTEC Level 3 qualification in Fine Art or related subject
- the International Baccalaureate Diploma

Many other qualifications are also accepted. Check college and university websites for more details.

The entry requirements for relevant HNDs and foundation degrees are similar to those needed for the Foundation course mentioned above.

If you go on to a degree directly, you'll usually need:

- 2 or more A levels. Many courses ask that you have at least a B grade in an art-based subject
- 4/5 GCSEs at grade C or above. A pass in English is often required

If you've taken the International Baccalaureate Diploma, many courses will ask that you have Art at Higher level.

Some universities accept the Advanced Welsh Baccalaureate as equivalent to one A level



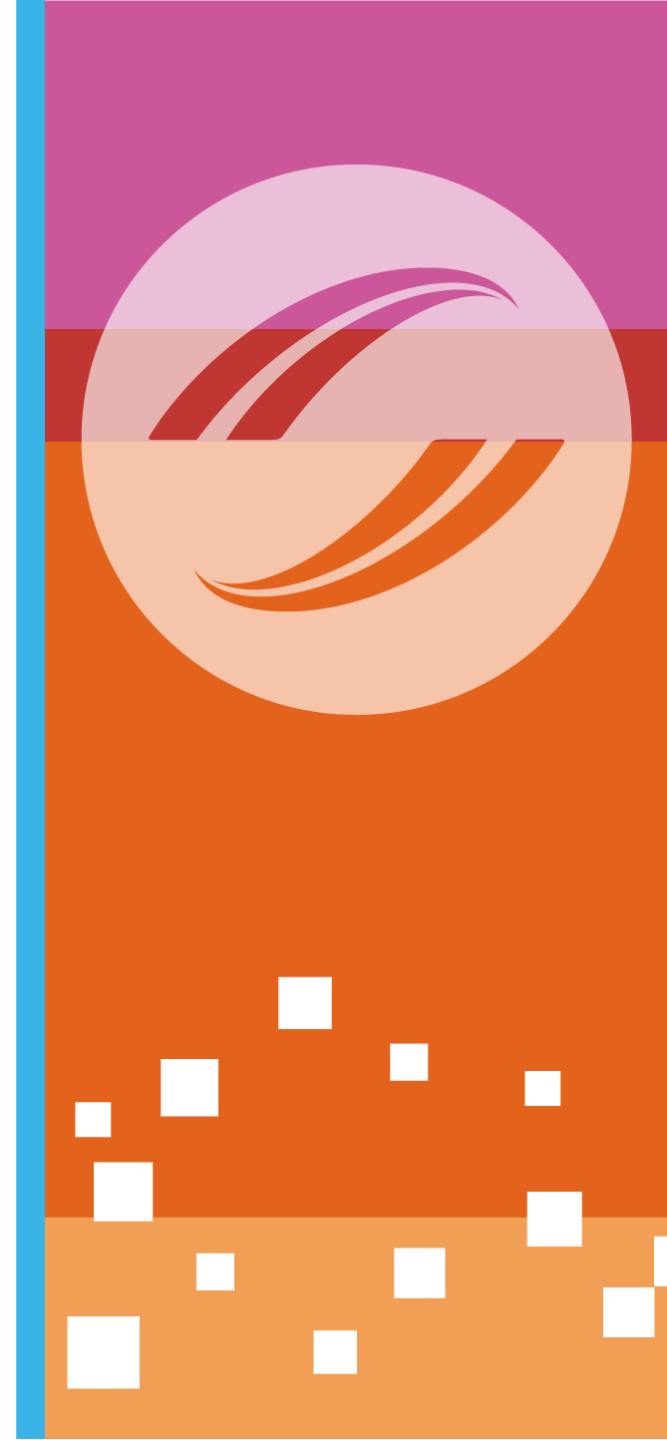
Skills and Qualities

As an Artist, you need:

- creative and artistic skills
- a good understanding of colour, shape and form
- to enjoy working on your own
- self-motivation, determination and self-confidence
- business skills, if you're self-employed
- to be able to cope with fluctuating work and income
- marketing skills
- to work to deadlines and budgets
- to be the kind of person who can cope with rejection

Do I need Welsh Language skills?

Welsh Language skills are often asked for. Being able to read, write and speak Welsh may be an advantage when you're looking for work in Wales.



Entry Routes

A common route into this career is via a Foundation course in Art and Design followed by a degree, HND or foundation degree in a subject such as fine art or visual arts.

For relevant Higher Education courses, you'll need a wide-ranging portfolio.

Many degree courses in fine art include art history as part of the course. You should check the proportion of practical work to theory on each course, as this varies considerably. Most courses offer experience in a wide range of fields, with specialisation in the later stages of the programme. Departments of art put on exhibitions of students' work. This may help you to establish a reputation and provide a basis for a career as a full-time Artist.



Salary

The pay rates given below are approximate.

- Starting: £21,000
- With experience: £25,000 - £28,000
- Senior Artists earn up to £50,000

You may face long periods without work.



For more information please use the QR code.



For entry to the Sixth Form, some schools require that students need 5 A*-C at GCSE such as:

Art & Design

- B in Art

DT: Product Design

- C & above in DT or Art
- B+ in BTEC Engineering

DT: Fashion & Textiles

- C & above in DT
- B+ in Art
- C English Language, B+ would be beneficial



For more information or help with your career planning

Please Contact your school-based careers adviser

Deb Smith
Careers Adviser
Careers Wales

Mobile: 07890 274896

E-mail: deb.smith@careerswales.gov.wales



For more information or help with your career planning

Please Contact your school-based careers adviser

David Jones Careers Adviser

david.jones@careerswales.gov.wales

Direct Number: 02920 84 6691

Mobile: 7827991532

